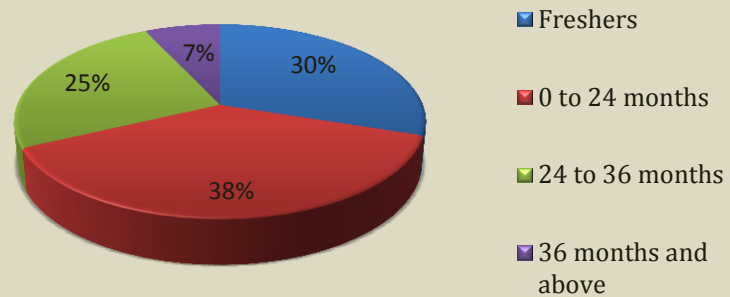


## PLACEMENT UPDATE: 1<sup>ST</sup> JAN 2018 (ONGOING)

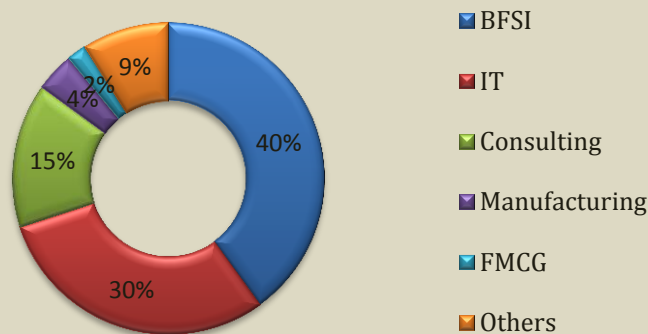
The 2016-18 Batch is a mix of Freshers and laterals, comprising of 30 % Freshers, 38 % students with experience upto 24 months, 25 % students with experience between 24 and 36 months and remaining 7 % with experience above 36 months.

### Work Experience



The largest hiring sector was BFSI with around 40 % students getting placed in this sector.

### Sectorwise Hiring



Although IT industry had a slowdown the sector hired around 30 % of the batch placed, followed by Consulting and Analytics with 15%. Manufacturing sector hired about 4 % of the students; FMCG was around 2 % and 9 % in other sectors.

## PLACEMENT UPDATE: 1<sup>ST</sup> JAN 2018 (ONGOING)

### FINAL PLACEMENTS

480 Students

80% Placed

101  
Recruiters

20 New  
Recruiters

Highest CTC  
25 LPA (Rs.)

80% Increase  
in PPOs

Average CTC  
10.05 LPA (Rs.)

### SUMMER PLACEMENTS

480 Students

60% Placed

62  
Recruiters

15 New  
Recruiters

Highest Stipend  
1,54,000 (Rs. Per Month)

Average Stipend  
18,400 (Rs. Per Month)